



TU-9230 REFRIGERATION TRAINING SYSTEM

This training unit teaches the principals of medium and low-temp refrigeration. The unit is a split-system design with an evaporator featuring an EEV (electronic expansion valve), a suction pressure transducer, and temperature sensors to control the evaporator. Using the most advanced commercial refrigeration control in the market (the Heatcraft IntelliGen Refrigeration Controller,) the student can perform educational tasks such as programming of parameters and troubleshooting common failures. Airflow can be controlled to simulate various refrigeration field situations. Various faults which can be triggered to teach the student to recognize and troubleshoot common refrigeration problems, such as an open run capacitor, defective compressor valves, and open temperature sensors.

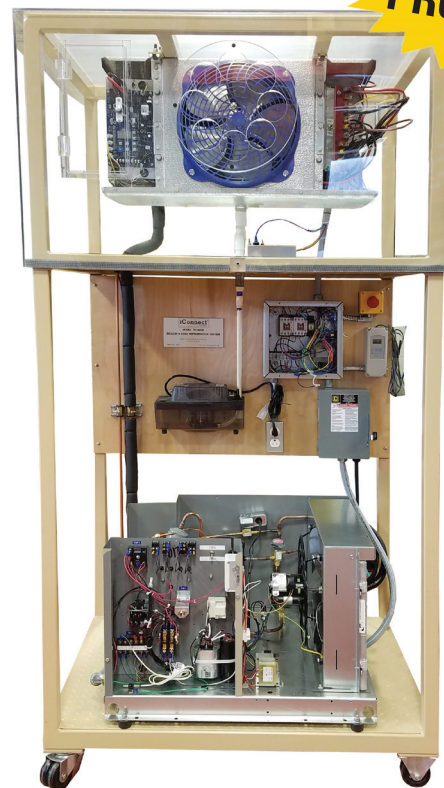
Specifications

Electrical Requirements: 240V/208V; 60Hz; 15A; Single phase

Uses R449A refrigerant

Includes a fused disconnect, emergency stop switch, thermostat, condensate drain pan, condensate pump, and auxiliary heater to control load

NOTE: 240V plug not included



Shipping Weight: 800 lbs.

Shipping Dimensions: 40" L x 30" W x 79" H

This training unit includes a standard-range iManifold® 900C System Analyzer kit for real-time system performance analysis suitable for projector or large screen display in the classroom. This kit works on most smart devices (customer to provide, with appropriate cable.) 1-year iManifold® Pro+ subscription is included for one user; additional student subscriptions are available. Also, included is a card to request a complementary iManifold PULSE Kit (single-circuit 801PL) with a one-year Pulse Subscription. Value of \$815! We hope you can use this latest technology, a leave-behind installation for a package unit to teach your students the installation and monitoring process and watch the continuous data feed for educational opportunities.

